



Apartment 9, Lynthorpe House, Baron Street - Shoreham Street (S1 4TL)



Key features

Brand New High Spec Development!
Close to City Campus
TV Included In Lounge

Large Living Area
2 EnSuite Shower Rooms
New Fitted Kitchen

Description

Dove Properties are proud to present this brand-new high specification development of two-bedroom student apartments, ideally located within walking distance of both the Sheffield Hallam University's City Campus and the City Centre. This self-contained two-bedroom ground floor apartment is furnished to a high standard with all new furnishings throughout, each bedroom has a large bed, double wardrobe with drawers, bedside cabinet, desk and chair. The en-suite shower rooms to each bedroom has a WC, vanity unit, handbasin, mirror, and shower cubicle.

The living room has a dining set in a "bistro" style including chairs, modern sofa seating (either a corner or two sofas will be provided to the property), coffee table, TV and a Hoover. The modern kitchen has been finished to a high standard and will have an integrated fridge/freezer, 4 function electric fan oven, 4 zone electric hob, plus an integrated washer dryer.

The site itself is gated and there is some parking available at an additional cost - please ask for further details. The interest in these flats is usually very high and they do not stay around for long!

Note - The rent for the apartment is £925 pcm, which works out as £106.73 per person per week approx. Please note that the council will not grant parking permits for this property.

Follow us on Twitter & Instagram '@Dovesheffield' for latest news and updates, and be the first to hear about our new properties.

This property is presented on an 'Advertising only' basis for a local Landlord. Applicants for the property will have

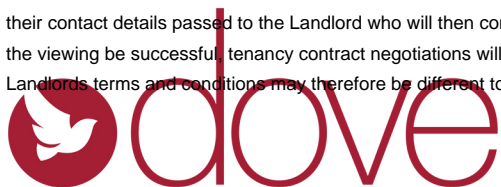
Call us on
01142 660 660

© Dove Properties and Estates Limited

Dove Properties, 430 Ecclesall Road, Sheffield, S11 8PX

Email info@doveproperties.co.uk
Website www.doveproperties.co.uk

their contact details passed to the Landlord who will then contact you to organise a viewing of the property. Should the viewing be successful, tenancy contract negotiations will be handled by the Landlord. Please note the Landlord's terms and conditions may therefore be different to those outlined on our website information pages.



Overview

Location	SHU City/Shoreham Street
Beds	2 student property
Price	£925 per calendar month for the apartment (£106.73 pp/pw approx.)
Furnishing	Furnished

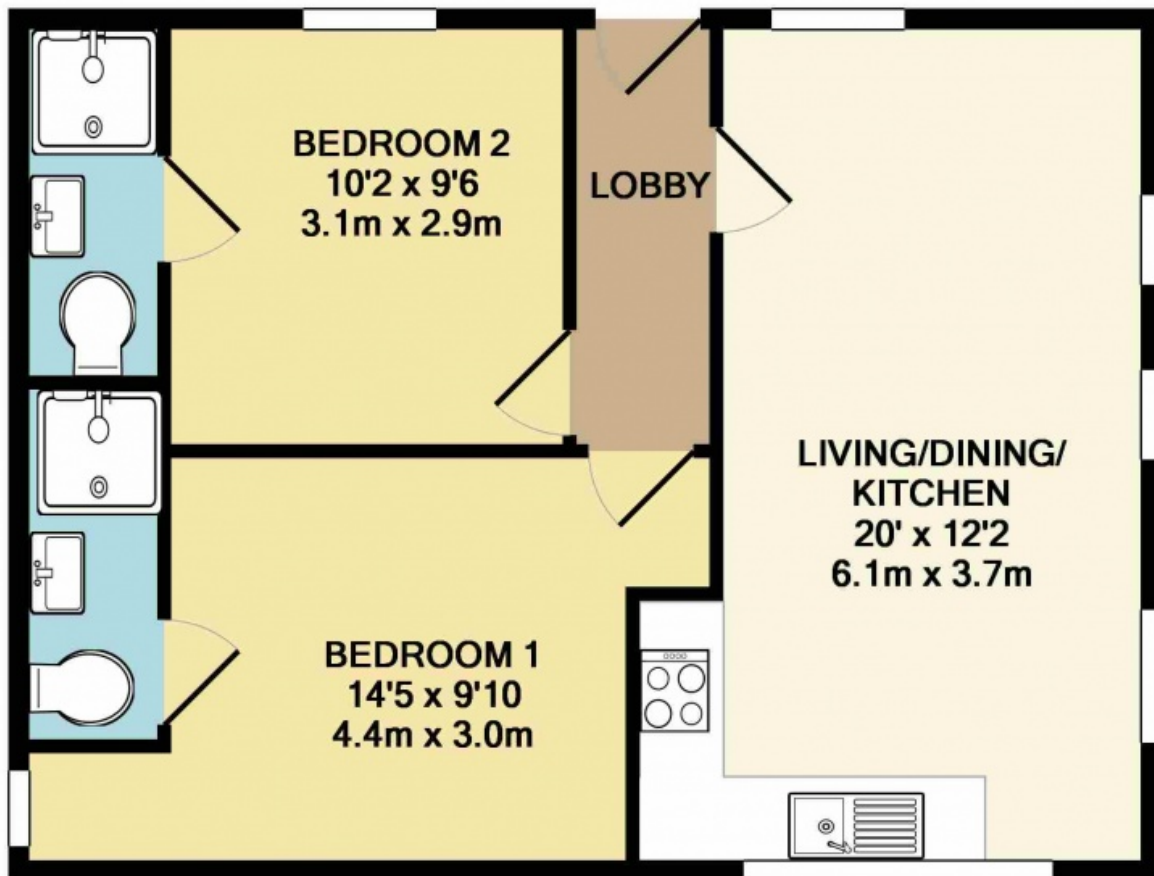
Call us on
01142 660 660

© Dove Properties and Estates Limited

Dove Properties, 430 Ecclesall Road, Sheffield, S11 8PX

Email info@doveproperties.co.uk

Website www.doveproperties.co.uk



TOTAL APPROX. FLOOR AREA 531 SQ.FT. (49.3 SQ.M.)
Measurements are approximate. Not to scale. Illustrative purposes only
Made with Metropix ©2018

Call us on
01142 660 660

© Dove Properties and Estates Limited

Dove Properties, 430 Ecclesall Road, Sheffield, S11 8PX

Email info@doveproperties.co.uk

Website www.doveproperties.co.uk