



Flat B, 212 London Road, London Road (S2 4LW)



Key features

REFURBISHED THROUGHOUT IN SUMMER 2014

All En-Suite Bedrooms

New Modern Furniture

Convenient for Sheffield Hallam

Large Beds Throughout

Close to City Centre

Description

This property has undergone an extensive refurbishment programme over the summer 2014. With a brand new kitchen fitted including mod cons such as Oven & Hob, Fridge/Freezer and Washing machine. New flooring throughout. Each bedroom is complete with En-suite comprising a W.C, handbasin and large shower.

The property also benefits from having a shared balcony with the above flat to the rear of the property. Water bills included in the rent.

Notes: Induction pans must be used on hob. No gas at this property - Electricity Only for heating and hot water.

Also available with Electricity included + £14 pppw.

DEPOSIT - £150 per person

Overview

Location London Road

Beds 3 student property

Price £59 Per person per week Approx.
INCLUDES WATER BILLS

Application Fee: £65 per person
(includes VAT)

Furnishing Furnished

Call us on
01142 660 660

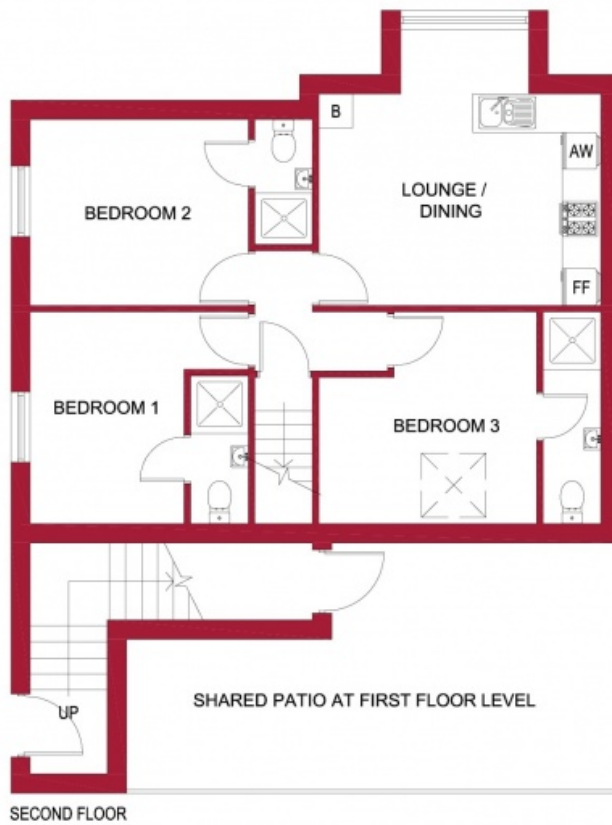
© Dove Properties and Estates Limited

Dove Properties, 430 Ecclesall Road, Sheffield, S11 8PX

Email info@doveproperties.co.uk

Website www.doveproperties.co.uk

212B London Road, Sheffield S2 4LW



LEGEND	
	Sky Light
	Fridge Freezer
	Auto Washing Machine
	Oven & Hob
	Shower Cubicle
	Sink
	Toilet

For identification only
Not to scale

Disclaimer:

"While every reasonable effort is made to ensure that information provided is accurate and up to date, no guarantees for the currency or accuracy of information are made. We assume no responsibility for its accuracy, adequacy or completeness of any information and are not responsible for any errors, or omissions, or the results obtained from the use of such information."

Call us on
01142 660 660

© Dove Properties and Estates Limited

Dove Properties, 430 Ecclesall Road, Sheffield, S11 8PX

Email info@doveproperties.co.uk

Website www.doveproperties.co.uk