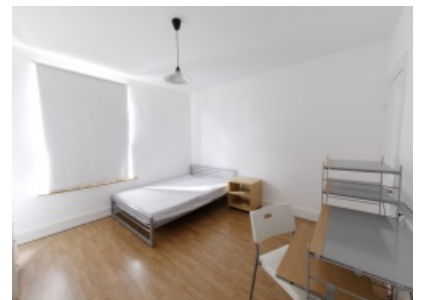




**118 Neill Road, Ecclesall Road
(S11 8QJ)**



Key features

Popular Location

Large Bedrooms

Rear Patio/BBQ Area

Bathroom with Shower Cubicle & Bath

Locks on Bedroom Doors

Modern Kitchen

Description

Well-presented modern 4-bedroom Student house in this very popular location off Ecclesall Road. Great location for students at either University.

The property briefly comprises of 4 double sized bedrooms each furnished with large bed, Lounge with modern sofas, and modern kitchen with oven, hob, fridge, freezer, washer/dryer, microwave. There is a large bathroom with shower cubicle and corner bath.

To the rear there is a sheltered rear courtyard area with picnic bench. The house is fully double glazed, comes with locks on the bedroom doors. Gas central heating.

BILLS INCLUSIVE OPTION AVAILABLE - ENQUIRE FOR DETAILS

This property is presented on an 'Advertising only' basis for a local Landlord. Applicants for the property will have their contact details passed to the Landlord who will then contact you to organise a viewing of the property. Should the viewing be successful, tenancy contract negotiations will be handled by the Landlord. Please note the Landlords terms and conditions may therefore be different to those outlined on our website information pages.

Call us on
01142 660 660

© Dove Properties and Estates Limited

Dove Properties, 430 Ecclesall Road, Sheffield, S11 8PX

Email info@doveproperties.co.uk

Website www.doveproperties.co.uk



Overview

Location	Ecclesall Road
Beds	4 student property
Price	£68 Per Person Per Week. Bills Inclusive Option Available
Furnishing	Furnished

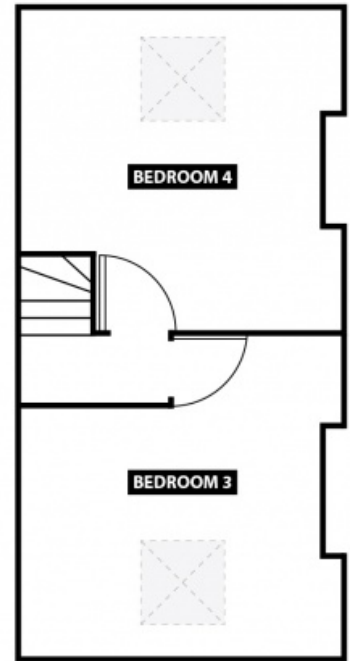
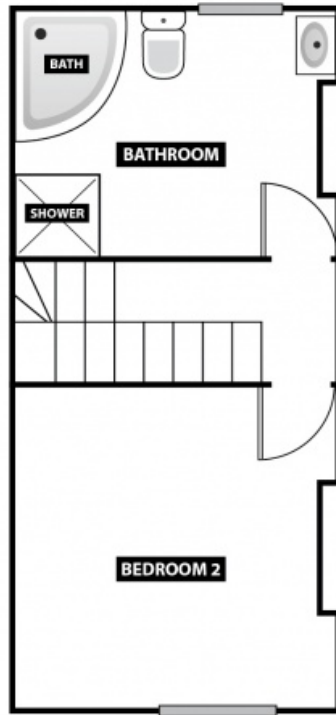
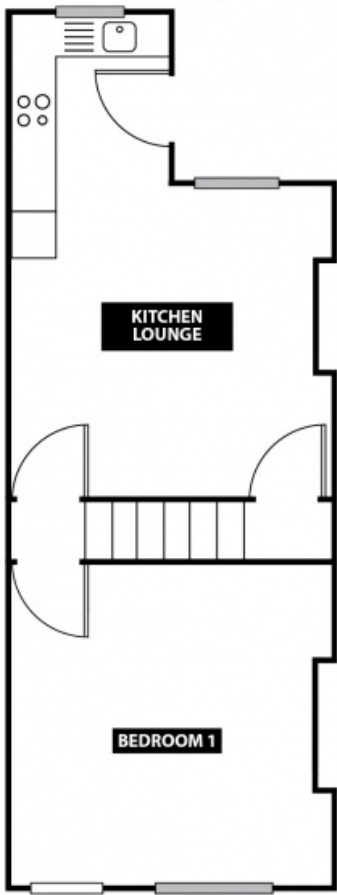
Call us on
01142 660 660

© Dove Properties and Estates Limited

Dove Properties, 430 Ecclesall Road, Sheffield, S11 8PX

Email info@doveproperties.co.uk

Website www.doveproperties.co.uk



Call us on
01142 660 660

© Dove Properties and Estates Limited

Dove Properties, 430 Ecclesall Road, Sheffield, S11 8PX

Email info@doveproperties.co.uk

Website www.doveproperties.co.uk